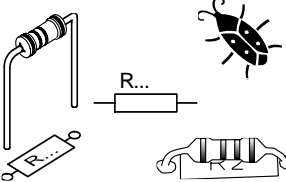


START



- 1 Resistor - Weerstand**
- ◇ R1,R2 : 1K (Brown, Black, Red) -(Bruin, Zwart, Rood) -(Brun, Noir, Rouge) -(Braun, Schwarz, Rot) -(Brun, Svart, Röd) -(Ruskea, Musta, Punainen) -(Marrón, Negro, Rojo) -(Castanho, Preto, Encarnado) -(Marrone, Nero, Rosso)
  - ◇ R3,R4 : 10K (Brown, Black, Orange) -(Bruin, Zwart, Oranje) -(Brun, noir, Orange) -(Braun, Schwarz, Orange) -(Brun, Svart, Orange) -(Ruskea, Musta, Oranssi) -(Marrón, Negro, Naranjado) -(Castanho, Preto, Laranja) -(Marrone, Nero, Aranciatto)
  - ◇ R5,R6,R7,R8 : 100 (Brown, Black, Brown) -(Bruin, zwart, Brown) -(Brun, noir, Brun) -(Braun, Schwarz, Braun) -(Brun, Svart, Brun) -(Ruskea, Musta, Ruskea) -(Marrón, Negro, Marrón) -(Castanho, Preto, Castanho) -(Marrone, Nero, Marrone)
  - ◇ R9,R10 : 220 (Red, Red, Brown) -(Rood, Rood, Bruin) -(Rouge, Rouge, Brun) -(Rot, Rot, Braun) -(Röd, Röd, Brun) -(Punainen, Punainen, Ruskea) -(Rojo, Rojo, Marrón) -(Encarnado, Encarnado, Castanho) -(Rosso, Rosso, Marrone)

- 2 LDR**
- ◇ LDR1
  - ◇ LDR2

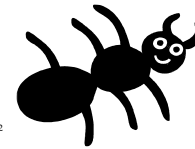
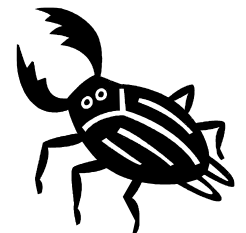
- 3 Switch**
- ◇ SW1
  - ◇ SW2

- 4 Hor. trimmer**
- ◇ RV1 : 22K (25)
  - ◇ RV2 : 10K
  - ◇ RV3 : 10K
- 5 TRANSISTOR**
- ◇ T1 : BC547C
  - ◇ T2 : BC547C
  - ◇ T3 : BC547C
  - ◇ T4 : BC547C
  - ◇ T5 : BC547C
  - ◇ T6 : BC547C
  - ◇ T7 : BC557C
  - ◇ T8 : BC557C

- 6 ELECTROLYTIC**
- Watch the polarity!  
Att. à la polarité!
- ◇ C1: 22µF
  - ◇ C2: 22µF

- 7 Battery holder**
- Red-Rood-Rouge-Rot  
Röd-Punainen-Rojo-  
Encarnado-Rosso

- 8 LED**
- Watch the polarity!  
Att. à la polarité!
- ◇ LD1
  - ◇ LD2



MK165 manual - edition 1 (révisé02)